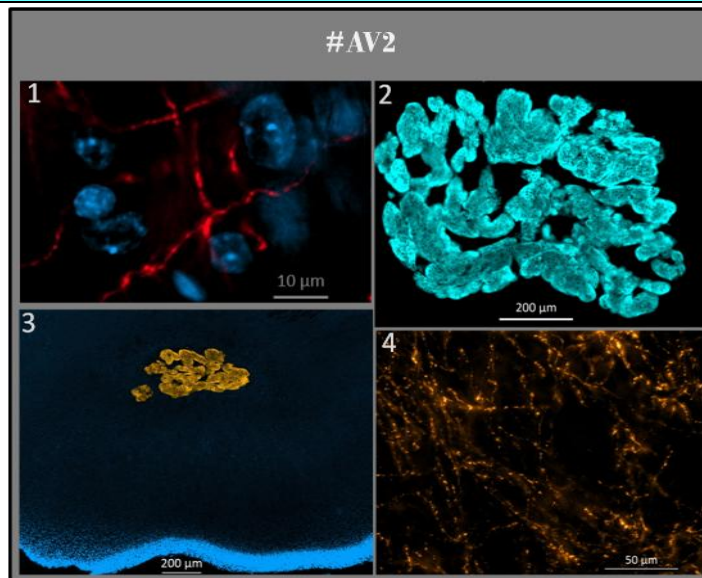


Mouse Anti-Norepinephrine Transporter (NET) antibody



1, 4 – NET-positive fibers in rostral ventrolateral medulla (RVLM) of rat brainstem;

2, 3 – Rat adrenal chromaffin cells.

Immunohistochemistry, 1:100

Description

Catalog No.:	#AV2
Background:	Neuronal uptake of norepinephrine into dense core vesicles is mediated by the norepinephrine transporter (NET). NET is also responsible for reuptake of norepinephrine from the extracellular space.
Quantity:	200 μ L
Price:	\$ 200.00
Shipping:	FOB
Form:	Tissue culture supernatant + 0.1% merthiolate
Host:	Mouse
Isotype:	IgG2b κ
Species Reactivity:	Mouse, rat
Immunogen:	Synthetic peptide: CYGITPENEHHLVAQRDVR
Clonality:	Monoclonal
Applications:	Immunohistochemistry (1:100), ELISA
Storage:	+4 $^{\circ}$ C; -20 $^{\circ}$ C for long-term storage
Research Use:	For laboratory research use only.